



Road works on the Peninsula Link Freeway continuing from 3 August 2025

Community notification

July 2025



Peninsula Link is carrying out major road works across 14 kilometres of the freeway to maintain a safe and reliable connection for drivers travelling between the Mornington Peninsula and Melbourne's south-east.

We will do these works in sections, rebuilding the freeway from the ground up, replacing layers of pavement below the road surface to make it stronger and better suited to road conditions.

The second stage of works will involve reconstructing a section of the freeway just between Frankston-Flinders Road and Bungower Road in the southbound direction.

Please refer to the map overleaf.

When we'll be working

We will be working at this location for up to 21 days, from **10am Sunday 3 August** to 10pm Wednesday 27 August, before moving on to the next work area.

Works will be carried out during the day and night, seven days a week.

Exact work dates are subject to weather conditions.

Upcoming works: From 10am 3 August to Wednesday 27 August

To ensure the safety of motorists and our workers, lane and ramp closures will be in place within the work zone at times, as follows:

- The fast lane will be closed for up to 10 days while the slow lane remains open to traffic.
- After this, the slow lane will be closed for up to 11 days while the fast lane stays open.
- The Frankston-Flinders on ramp will be closed for up to 11 days while work is being carried

out on the slow lane. A detour will be in place via Frankston-Flinders Road, Moorooduc Highway and Bungower Road during this time.

- The Bungower Road off ramp will also be closed for up to 11 days while work is being carried out on the slow lane. A detour will be in place via Mornington-Tyabb Road and Moorooduc Highway during this time.

Access to the service station junction will be maintained at all times.

Once these works have been completed, a temporary speed limit of 80km/hr will be implemented until crews return in September to lay the final surface.

Motorists are advised to plan ahead, allow extra travel time, and follow the instructions of traffic controllers and signage around the worksite.

Visit peninsulalink.com.au for updates on the works.

There may be disruptions to public transport services during these works. Please visit the Public Transport Victoria website (ptv.vic.gov.au) for the latest updates.

What will this mean for you?

During the works, you may notice:

- workers and vehicles
- traffic controllers and signage
- road closures and reduced speed limits
- noise from machinery and equipment.

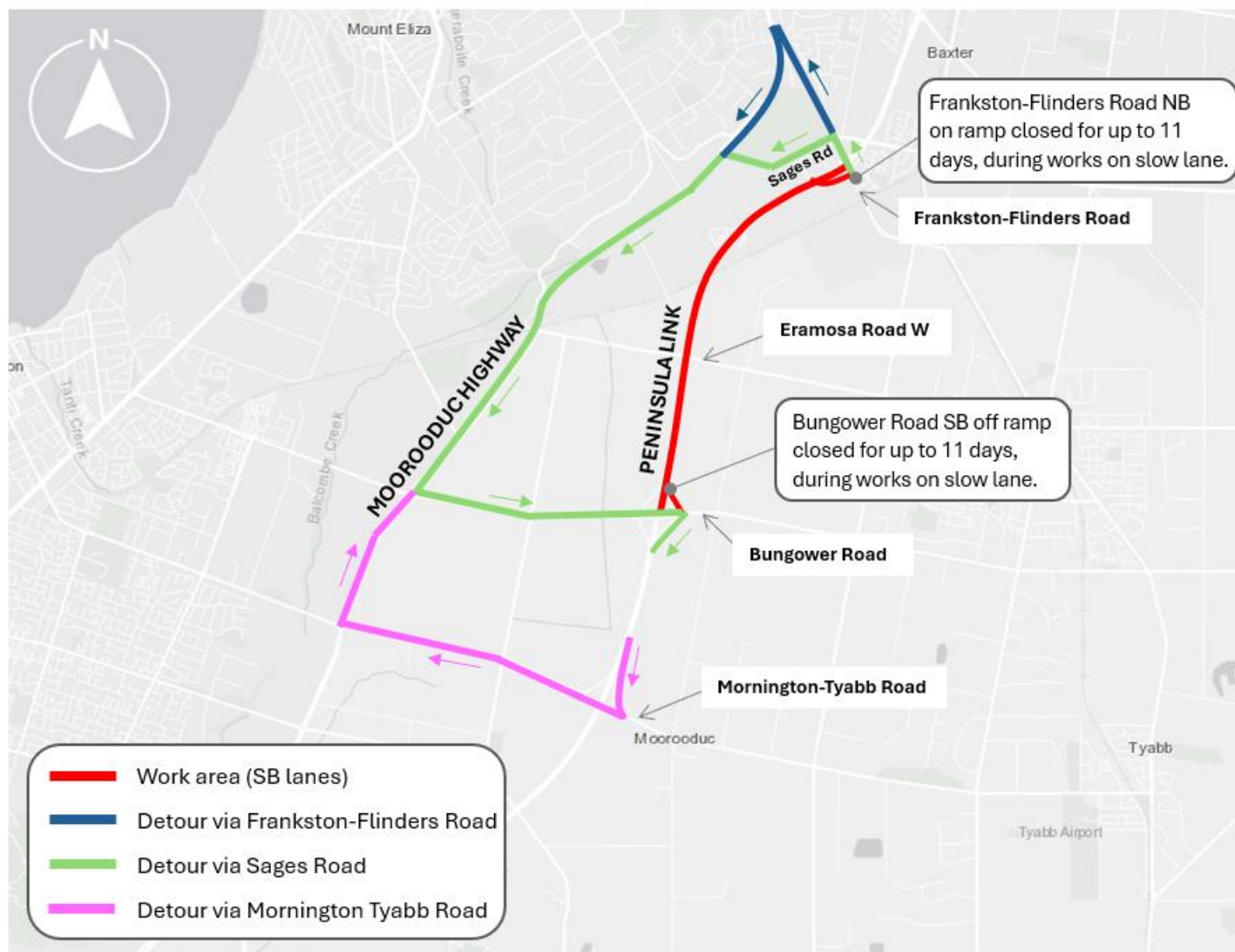
Stay up to date

For more information about these works or if you would like to be notified about other upcoming works on the freeway, you can contact us on 03 8592 6689 or

peninsulalink@servicestream.com.au.



Location of work (Southbound lanes only)



Contact us

If you have any questions regarding works on the Peninsula Link Freeway, please contact us using the details below. For more information regarding upcoming works, please visit our website.

 03 8592 6680

 peninsulalink@servicestream.com.au

 peninsulalink.com.au



If you need help understanding this information, please contact the Translating and Interpreting Service on 131 450.